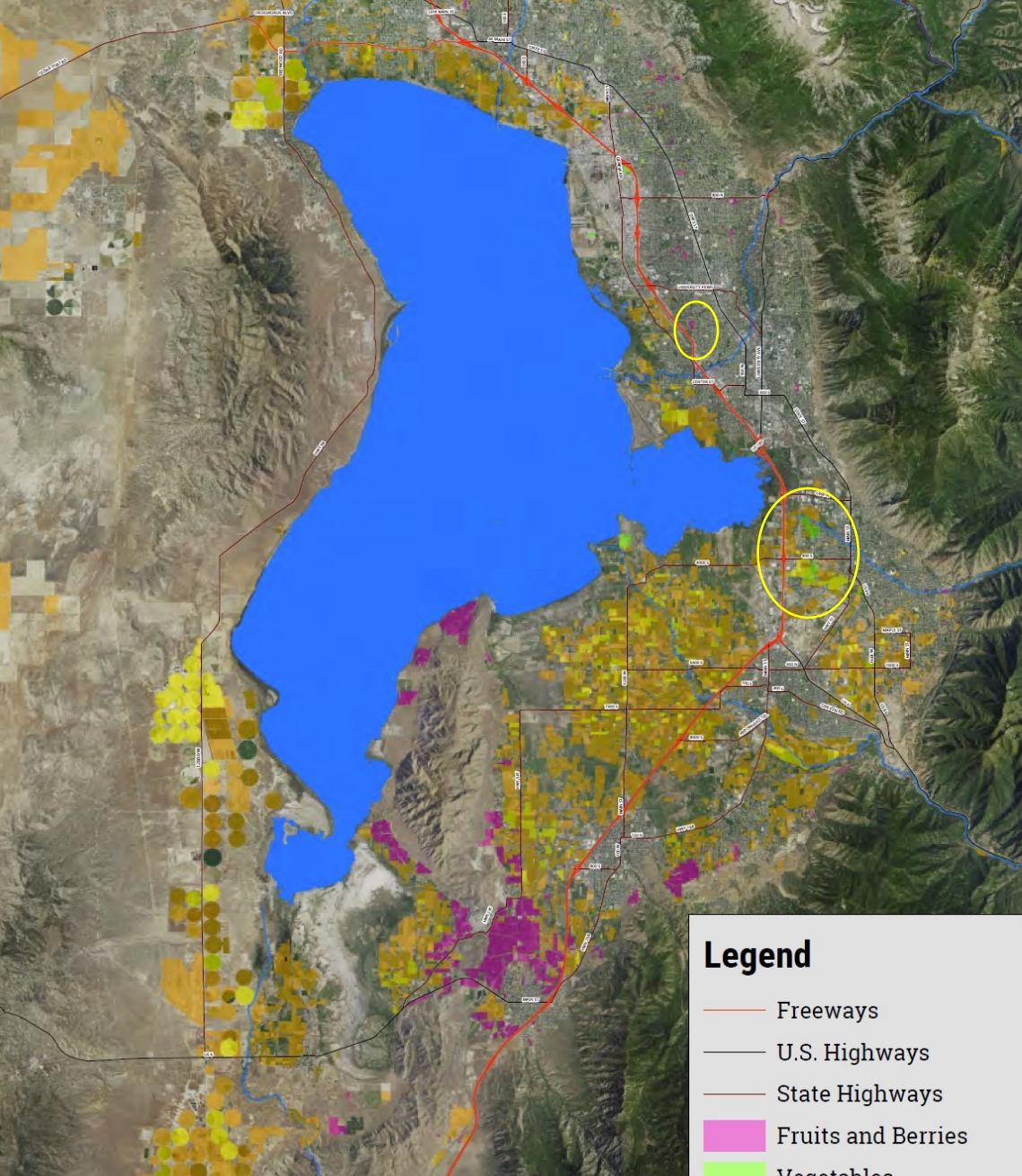


Protecting Our Farms

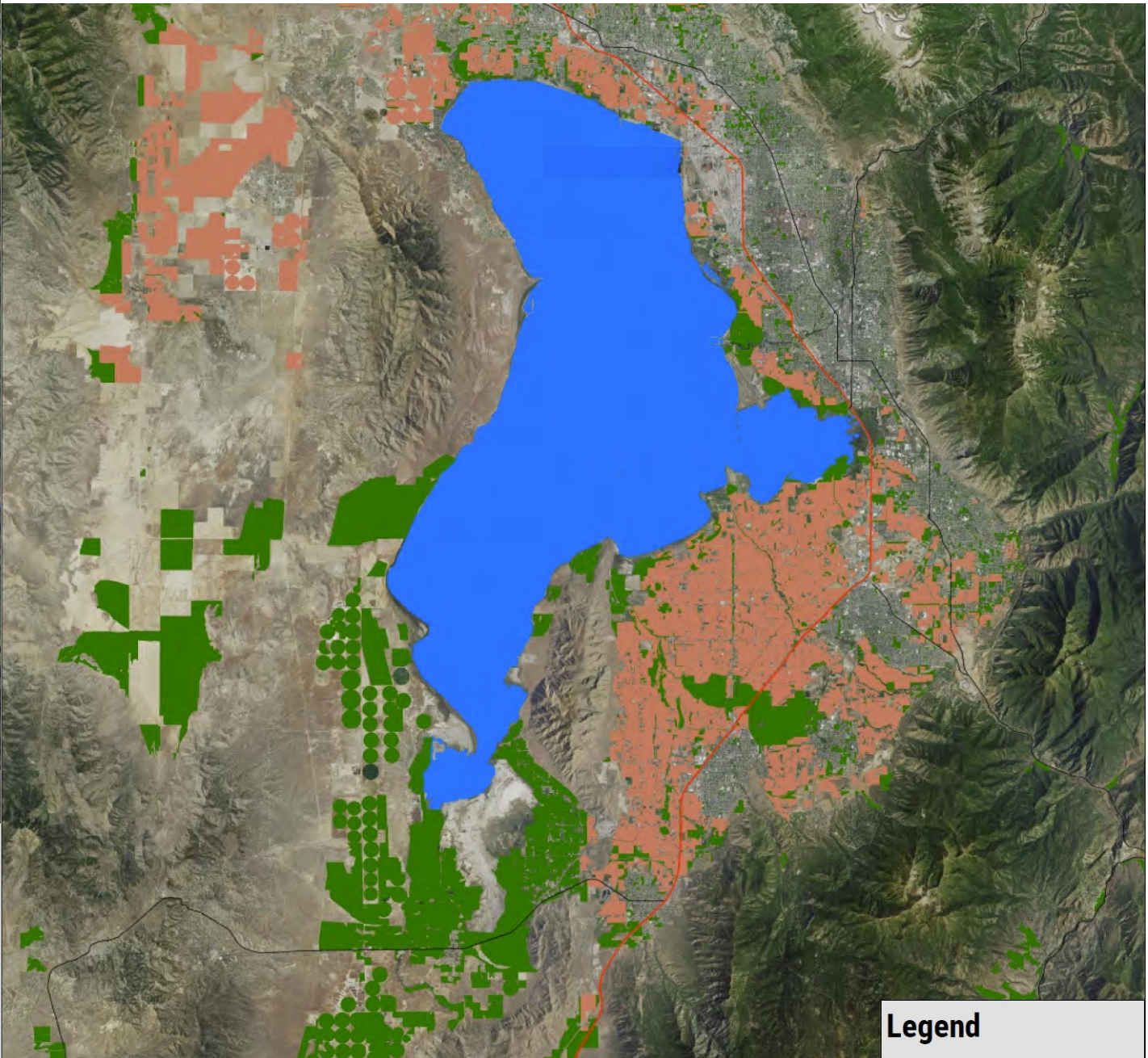
Shawn Miller, BYU



Legend

- Freeways
- U.S. Highways
- State Highways
- Fruits and Berries
- Vegetables
- Hay, Alfalfa, and Other
- Corn

Current Utah County Crops

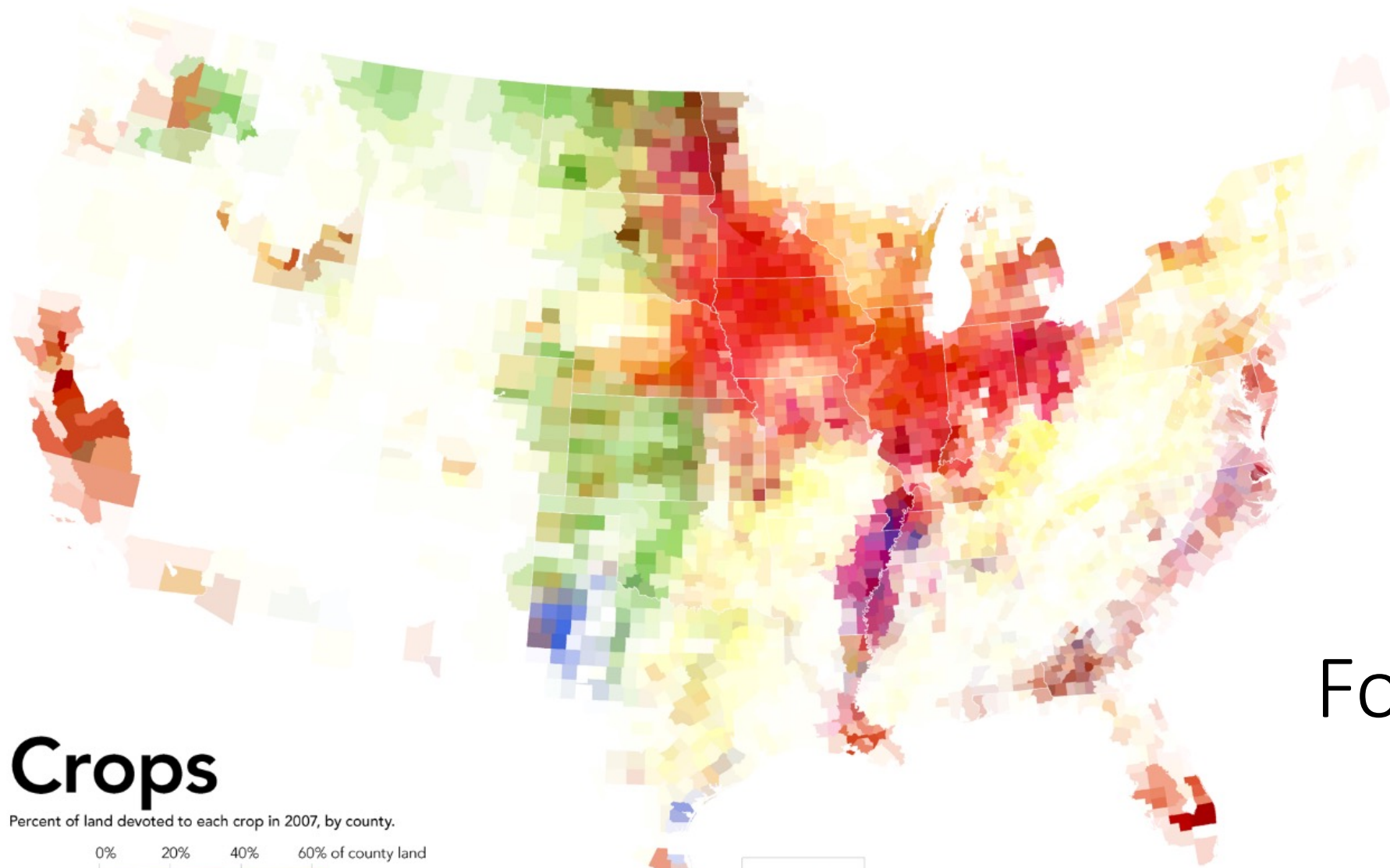


Legend

- Developed Farmland
- Remaining Farmland
- Lakes

Current Farmland Developed by 2050

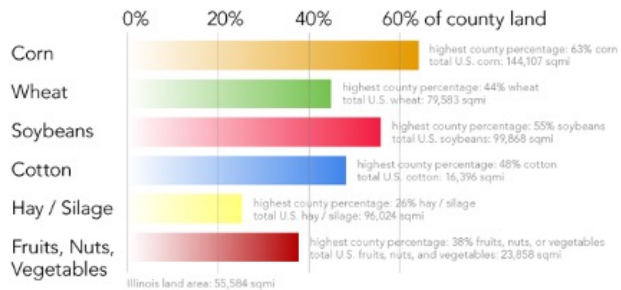
If current trends continue, all of Utah Valley's orchards and half of its farms will disappear by 2050.



Food Security

Crops

Percent of land devoted to each crop in 2007, by county.



No cartographically meaningful agriculture in Alaska. Only inhabited islands shown.



All maps shown at the same scale using equal-area projections. Data from the 2007 U.S. Census of Agriculture. Map by Bill Rankin, 2009.

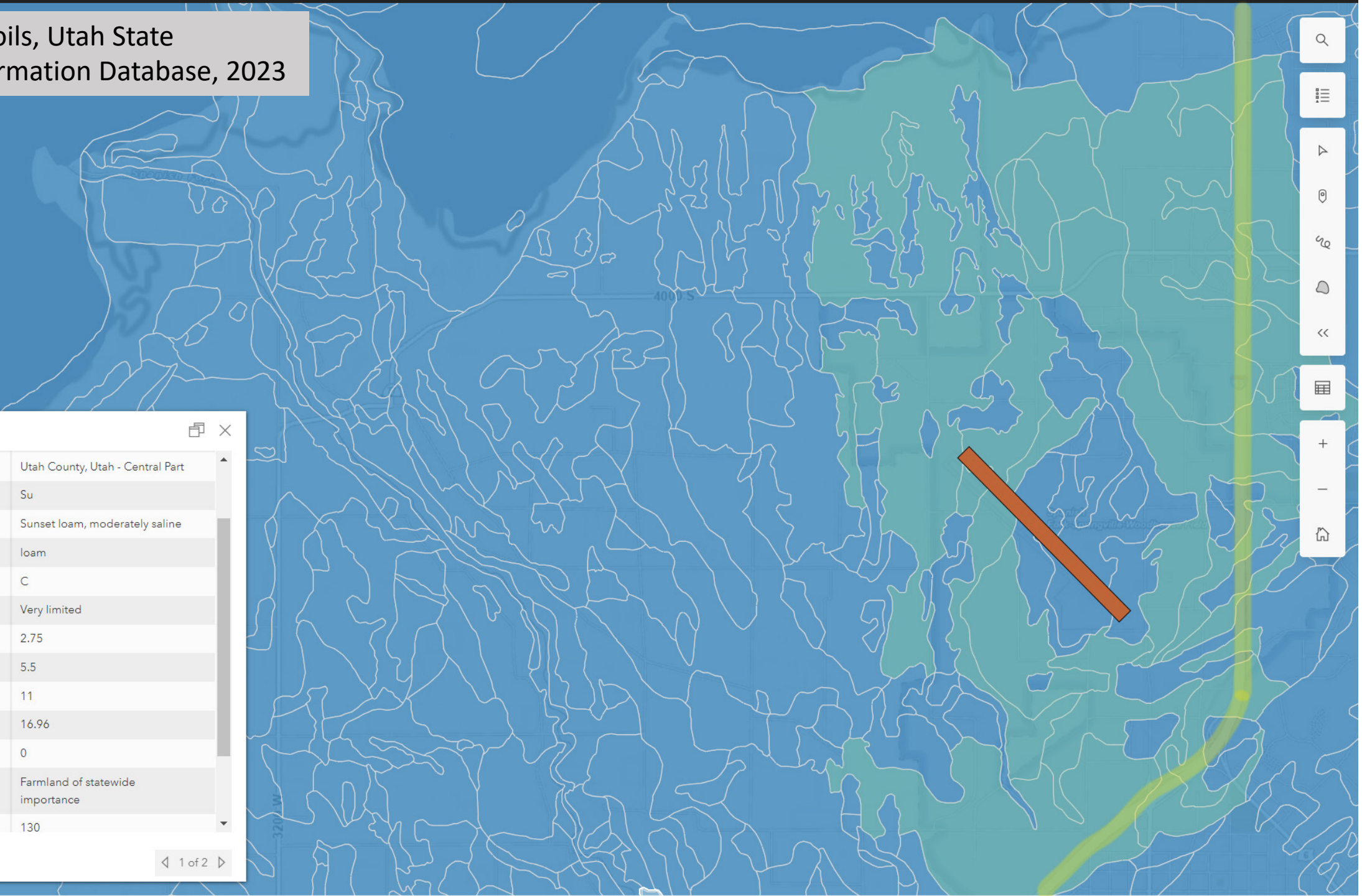
Source: Utah Soils, Utah State Geological Information Database, 2023



Soils [Close] [Copy]

areaname	Utah County, Utah - Central Part
musymbol	Su
muname	Sunset loam, moderately saline
musurftexgrp	loam
hydgrpdc	C
engdwbl	Very limited
aws025wta	2.75
aws050wta	5.5
aws0100wta	11
aws0150wta	16.96
hydclprs	0
farmlndcl	Farmland of statewide importance
wtdepanmin	130

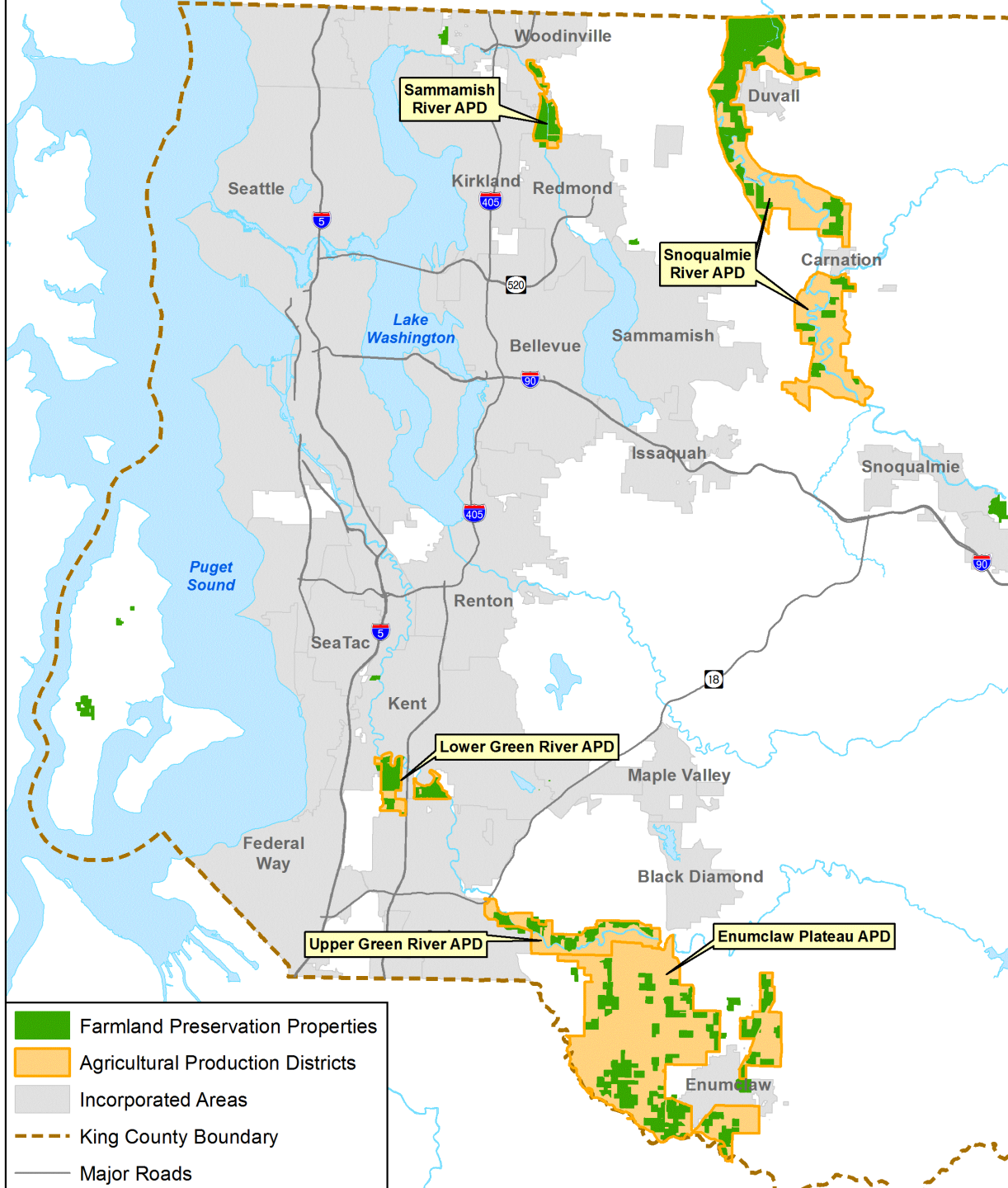
Zoom to [1 of 2]



Cumberland Co., New Jersey



- July 2016
- Preserved Easements
 - Preserved With Federal Funding
 - Current Applications
- Base Map**
- County Boundaries
 - Municipal Boundaries
 - Adjacent State/County Boundaries
 - Pinelands Area
 - Pinelands Development Credits
 - Municipal, County and Non-Profit Preserved Open Space
 - State Owned Conservation Easements
 - State Owned OS & Recreation
 - Lakes



King County, WA, as of April, 2013

What about Utah?

- Currently we have only 331 total conservation easements
 - A total of 17,000 acres
 - Most are wilderness, not farms
- We have easements on fewer than 40 farms and ranches
 - Many are viewsheds for summit county residents

Source: National Conservation Easement Database, Utah Report.

http://www.conservationeasement.us/reports/easements?report_state=Utah&report_type=All

Because Utah has so little farmland, we should be more tenacious than other states in protecting it.

Or, rather, with so much infertile land on which we can develop housing and warehousing, it makes little sense to pave over fertile farms.